

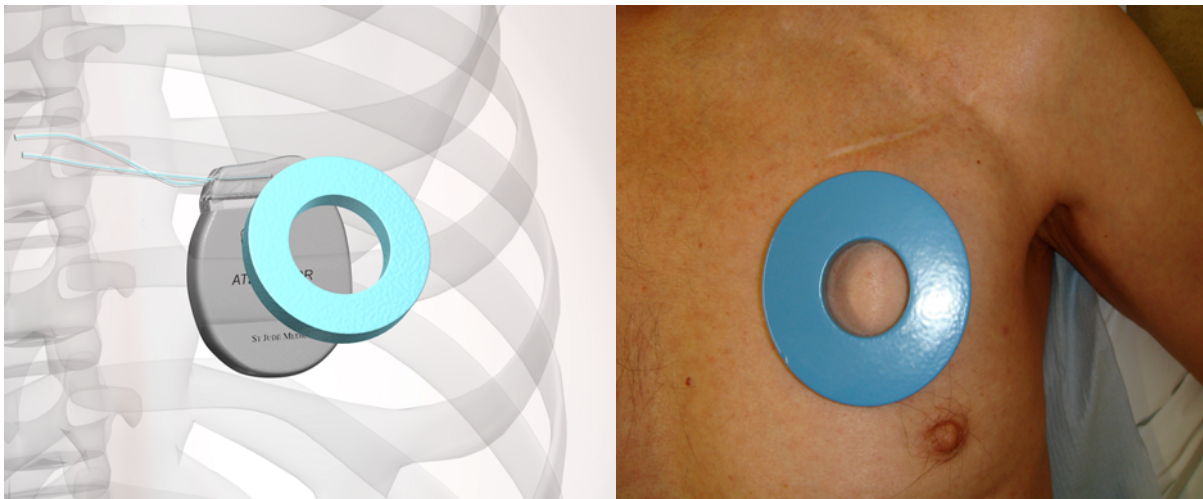
# How to use a Magnet.

## Any magnet will affect the functioning of an ICD (Implantable Cardioverter Defibrillator)

When a clinical decision has been made with the agreement of the Cardiologist to deactivate the shock therapy of an ICD, a magnet can be used temporarily to deactivate the device in urgent 'out of hours' situations.

The Cardiology Dept. should be contacted ASAP during normal working hours to formally deactivate the device.

- Place magnet directly over ICD – chest hair may need to be shaved off first
- Securely tape magnet over ICD – use Mefix or a foam adhesive dressing
- Leave magnet in place over ICD
- REMOVE the magnet for 2 seconds every 7.5 hours (also check for pressure damage and trauma when removed)
- Ensure Cardiology Dept. is contacted ASAP



Images reproduced with kind permission of ABMUHB and NHS Wales.

Nb – the magnet will NOT affect the brady /CRT pacing function of the ICD.

After use the magnet can be cleaned and re-used or order a replacement from the BHF Arrhythmia Nurses: 01823 343595

BHF Arrhythmia Nurses, MPH, November 2014 for review January 2016